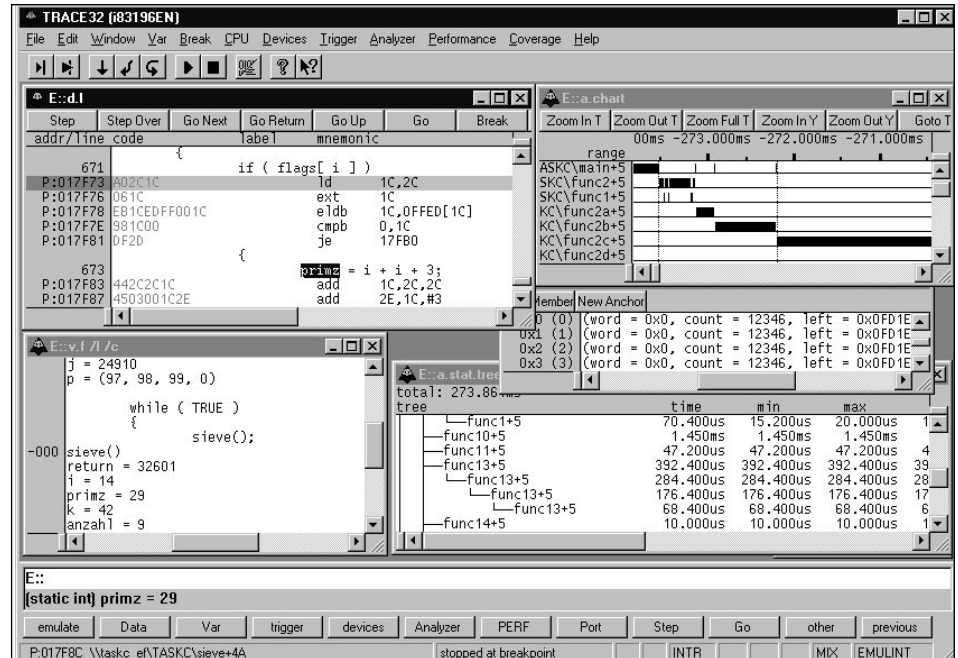


## TRACE32

- Universal In-Circuit Emulator For 8- to 32-Bit Microcontroller
- Unlimited Hardware Breakpoints
- Up to 16 Mbyte "DUAL-PORTED" Emulation Memory
- High Speed Link Via Ethernet LAN or Fibre Optic
- Up to 4M Frame Trace Buffer
- Real Time Trace and Trigger Up to 66 MHz
- Integrated High-Level-Language and Multi-Task Debugger
- Performance Analysis and Statistic Functions
- Timing-Analyzer With Pattern Generator and Line Tester
- Code Coverage Analysis

TRACE32 provides a complete set of development and testing tools. The advanced modularity of TRACE32 makes it very easy to upgrade the system to future needs. By adding or changing personality modules, another microcontroller or a new feature can be supported. TRACE32 has more interfaces to personal computers and workstations than other systems. The communication link to the host is done by the fibre optic interface or Ethernet allowing a high-speed transfer. Other standard interfaces such as SCSI, RS232, RS422 and a low-cost parallel connection are also supported. As software drivers are available for most systems, it is possible to share a TRACE32 in a LAN of personal computers and workstations.

The integrated HLL-Debugger with its powerful trigger and trace capabilities supports multi-task kernels as well as real-time systems, interrupts can be served at any time during single-step emulation (Ada, C, C++, Modula 2, Pascal, PL/M and assembly languages supported). The analyzer offers selective state trace as well as software performance analysis and statistic functions. The comfortable windowed user interface is completely configurable by the user, which offers more flex-



ibility. With its powerful printer interface, hardcopies of windows or screens can be made in text or graphic form which are best suited for technical documentation. The testing language PRACTICE-II with its macro concept can be used for automatic hardware and software test routines.

### MICROCONTROLLERS SUPPORTED:

80196Kx, 80C196Kx, 80196Nx, 803x, 80C3x, 805x, 87C5x, 8xC51Fx, 80C51GB, 80C51RA

### DEVELOPMENT PLATFORMS:

PC (Non-Windows), Sun PC/Windows, HP Workstation, RS6000, Unix, AXP-Station, DEC-Station, and VAX-Station

### AVAILABILITY:

Now

### CONTACT:

Lauterbach Datentechnik GmbH

Fichtenstr. 27

D-85649 Hofolding

Germany

Phone: (08104) 8943-0

FAX: (08104) 8943-49

e-mail: [info@lauterbach.com](mailto:info@lauterbach.com)

WWW: <http://www.lauterbach.com>

For international contacts, see Appendix B.

**LAUTERBACH**  
DATENTECHNIK GMBH

